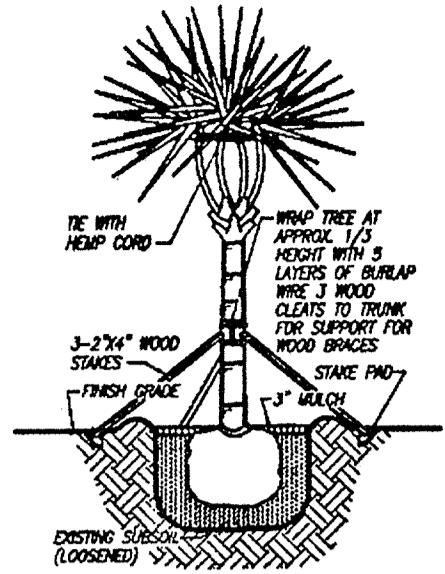
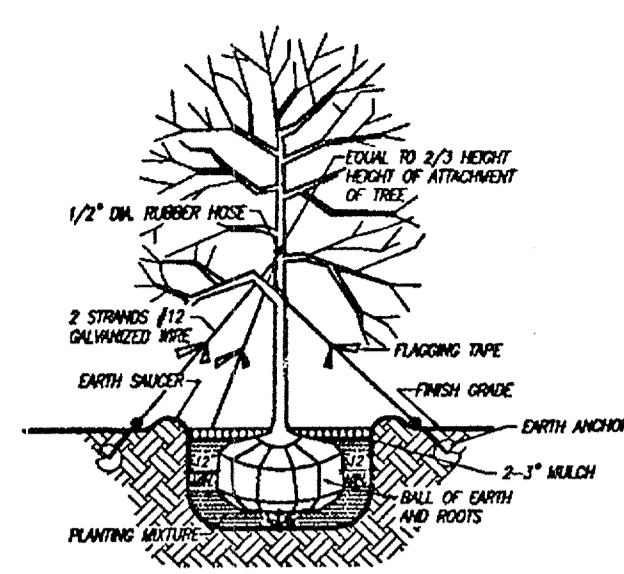




SHRUB AND GROUNDCOVER PLANTING DETAIL



PALM PLANTING DETAIL



TREE PLANTING DETAIL

PLANT SCHEDULE

QTY	PT VALUE	CLASS	SYMBOL	BOTANICAL NAME	COMMON NAME	SPECIFICATIONS
60	5pt ea	P Native	[Symbol]	Sabal Palmetto	CABBAGE PALM	10' c.t.
102	5pt ea	ST Native	[Symbol]	Coccoloba Uvifera	SEA GRAPE	36"-48"ht x 24"spr @ 30" o.c.
1,605 (3,610 sf)	10/100sf	G Native	[Symbol]	Helianthus debilis	BEACH SUNFLOWER	4" cont. x 6"spr @ 18" o.c.
166	10/100sf	S Native	[Symbol]	Coccoloba Uvifera	SEA GRAPE	24"-36"ht @ 36" o.c.
134	10/100sf	S	[Symbol]	Helianthus debilis	DWARF OLEANDER	30" ht @ 36" o.c.
24,990 sf	5/100sf	G	[Symbol]		FLORITAM SOD	

LANDSCAPE POINT SCHEDULE

480 POINTS PER ACRE REQUIRED

SITE AREA 2.19 AC. X 480 POINTS = 1051 TOTAL POINTS REQUIRED

LANDSCAPE MATERIAL REQUIRED

TREES (PALMS AND SEA GRAPES)  
1051 PTS. X 50% = 526 PTS. X (1 TREE/5 PTS.) = 105 TREES REQUIRED  
(60 PALMS AND 102 SEA GRAPES PROVIDED) = 810 POINTS

ASSOCIATED LANDSCAPE MATERIAL  
60 PALMS X 50 SQ.FT./TREE = 3000 SQ.FT. REQUIRED  
102 SM. TREES X 20 SQ.FT./TREE = 2040 SQ.FT. REQUIRED  
(28,600 SQ.FT. PROVIDED)

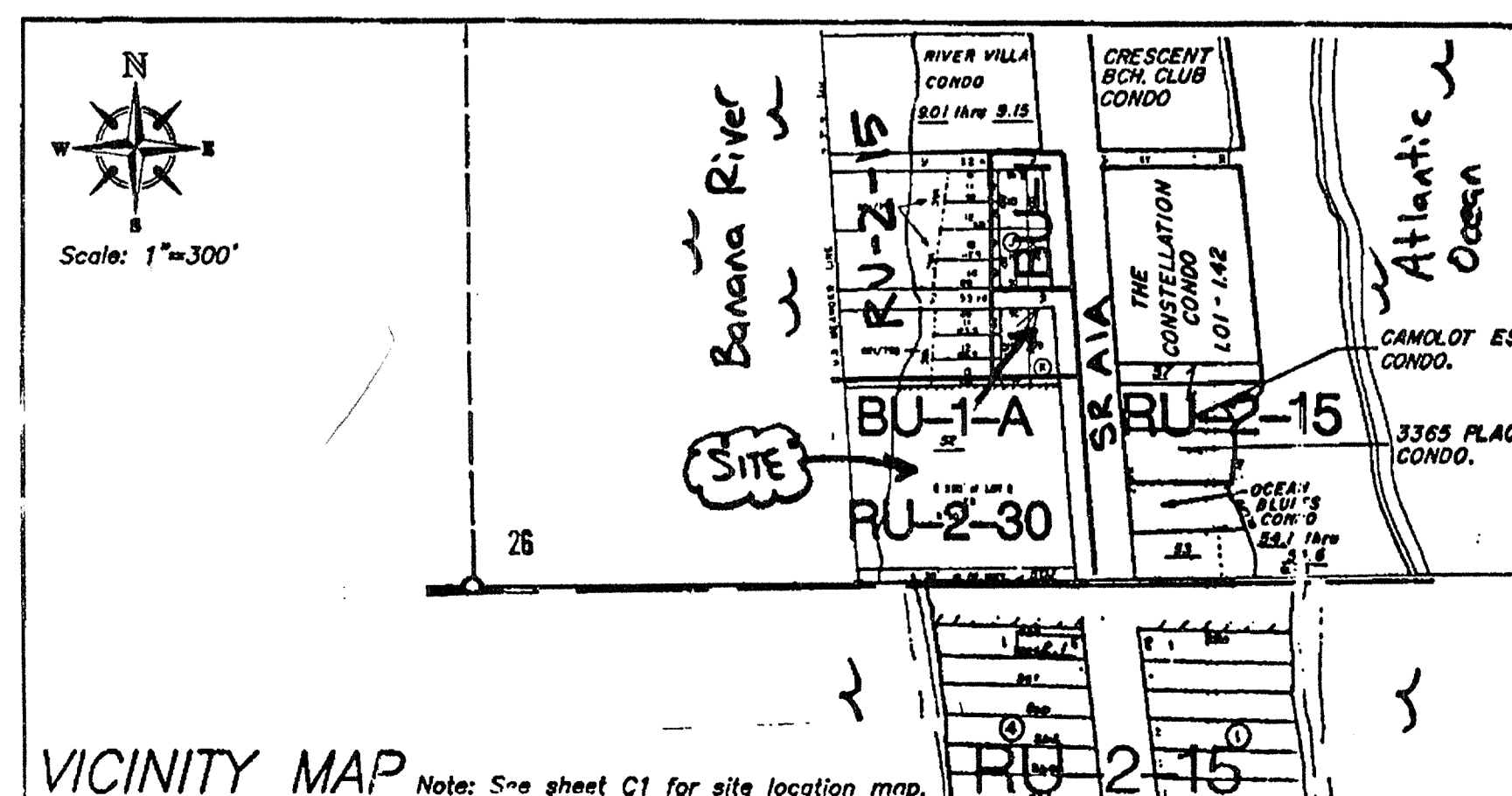
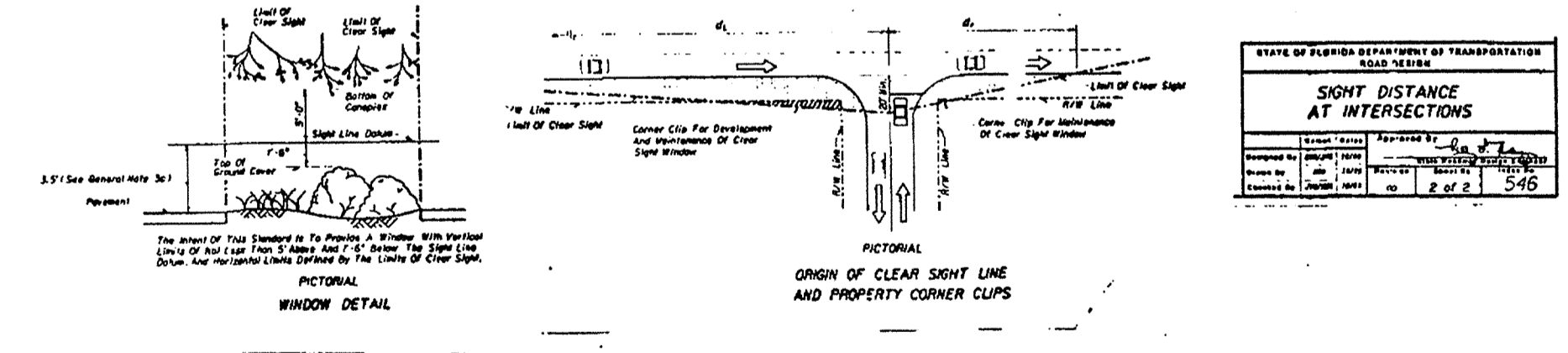
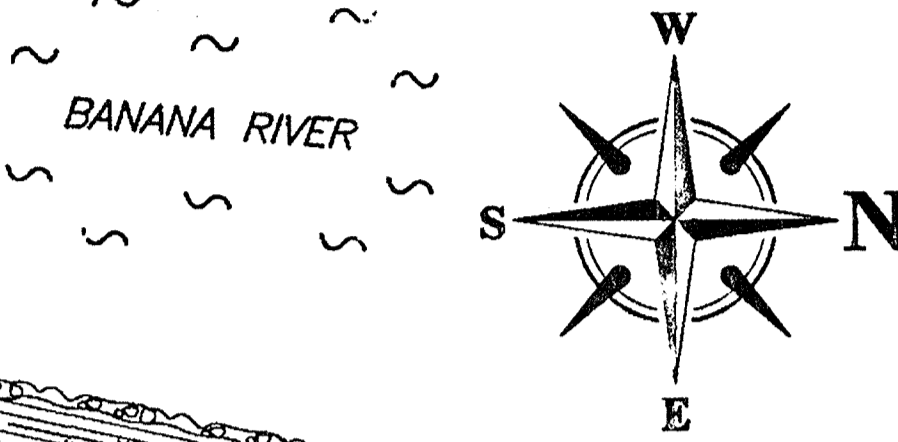
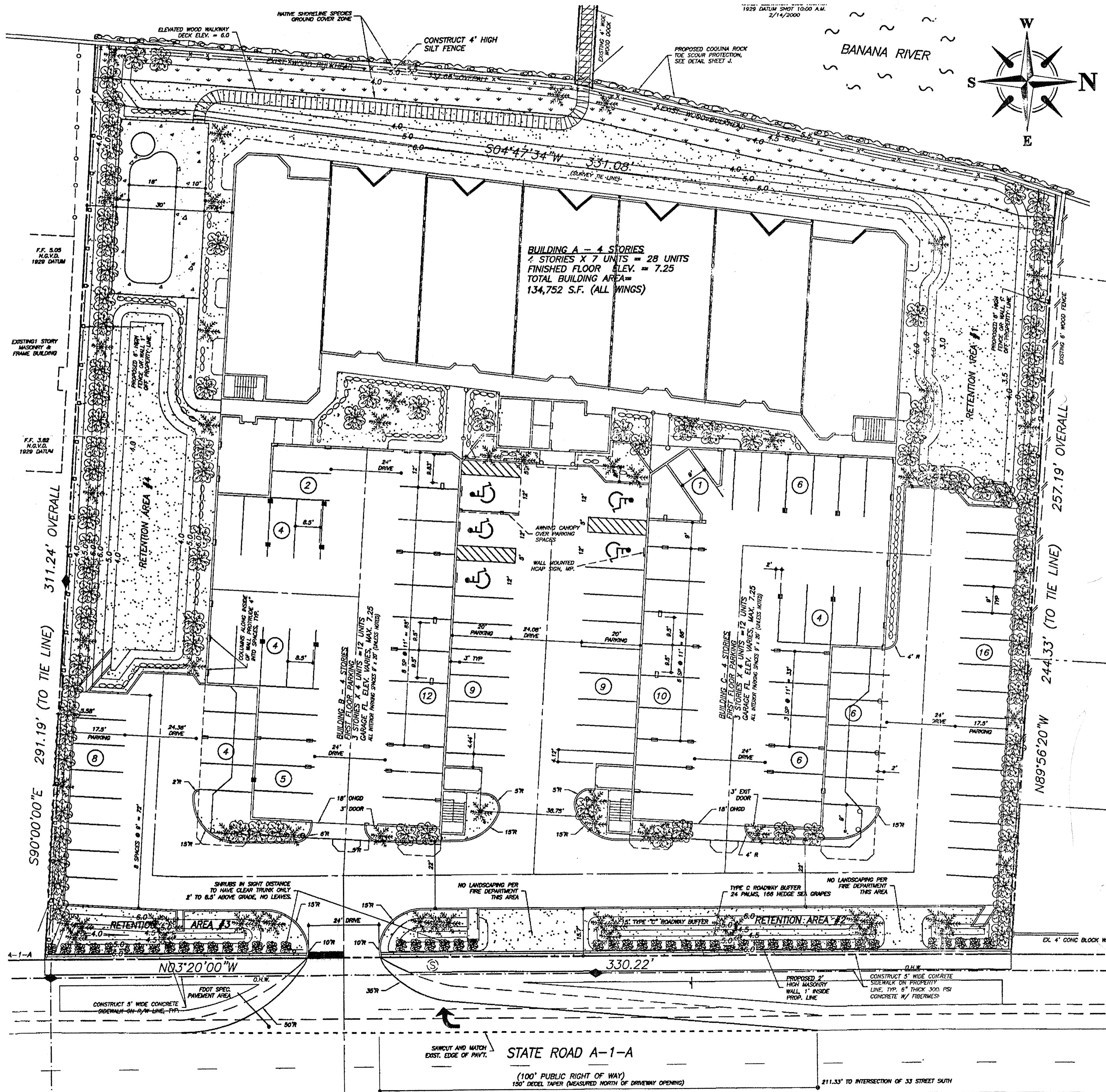
SHRUBS  
1051 PTS. X 25% = 263 POINTS REQUIRED  
(2637 SQ.FT. PROVIDED) = 264 POINTS

GRASSING (SOD)  
1051 PTS. X 25% = 263 POINTS REQUIRED  
(24,990 SQ.FT. PROVIDED) = 263 POINTS

TOTAL POINTS = 1337 POINTS

PLANTING NOTES

- Plant material shall be graded Florida No. 1 or better as outlined under Grades and Standards for Nursery Plants, State Plant Board of Florida, unless otherwise noted.
- Soil used for planting (planting mix) shall consist of 60% peat humus, 30% wood chips (Pine bark passing through 3/4" screen) and sawdust, 10% sand, and 2 lb. starter fertilizer per cubic yard. Soil mixture used to back fill planting pits shall consist of two parts existing topsoil from on-site and one part prepared planting mix (see above). Dolomite shall be used as needed to correct soil pH to 6.0-6.5.
- Plants shall be arranged in beds using triangular spacing.  
Plant fertilizer shall be Agriform 21 gram tablets, slow release, 20-10-5 analysis or approved equal. Rates of application shall be as recommended by manufacturer.
- Starter fertilizer shall be 6-6-6, 100% organic, with minor elements. This fertilizer shall have 40-50% of its total nitrogen in a water-insoluble form.
- Lawn areas shall be treated with fertilizer applied at a rate of twenty (20) pounds per 1000 square feet.
- All plant beds shall be top dressed with 2-3" Cypress bark mulch.
- Methods of tree staking indicated on the drawings are suggestions only. The landscape contractor shall use whatever method he deems fit, however, he will be held liable for any damages caused to trees by improper staking methods, (or absence of staking) and is responsible for uprighting and replanting trees which are blown over.
- In the event of a discrepancy between drawing and plant schedule, the drawing shall prevail.
- The owner shall install an irrigation system that will be controlled by an automatic timer with rain sensor and provide full coverage of all landscaped areas. The water supply for this system will be from an on-site well.
- Alternate plant types may be used with prior written approval by Brevard County.
- Palms shall not be placed in conflict with power lines, and all plantings shall not interfere with underground utilities.
- A landscape maintenance bond is required, paid prior to the request for final engineering inspection.
- IT IS VERY IMPORTANT THAT THE LANDSCAPING AROUND THE ENTRANCE INTERSECTION AT A1A IS PLANTED AND MAINTAINED PER FDOT INDEX 546, ESPECIALLY KEEPING ALL BUSHES TRIMMED IN THE 2 TO 8.5 FEET ABOVE GRADE RANGE WHICH WOULD OTHERWISE OBSTRUCT VISION.



NO.	DATE	REVISION
1	11/15/01	ISSUED FOR PERMITS - START SERVICE
2	11/15/01	REVISED PER PERMITS COMMENTS - START SERVICE
3	11/15/01	REVISED PER PERMITS COMMENTS - START SERVICE
4	11/15/01	REVISED PER PERMITS COMMENTS - START SERVICE
5	11/15/01	REVISED PER PERMITS COMMENTS - START SERVICE
6	11/15/01	REVISED PER PERMITS COMMENTS - START SERVICE
7	11/15/01	REVISED PER PERMITS COMMENTS - START SERVICE
8	11/15/01	REVISED PER PERMITS COMMENTS - START SERVICE
9	11/15/01	REVISED PER PERMITS COMMENTS - START SERVICE
10	11/15/01	REVISED PER PERMITS COMMENTS - START SERVICE
11	11/15/01	REVISED PER PERMITS COMMENTS - START SERVICE
12	11/15/01	REVISED PER PERMITS COMMENTS - START SERVICE
13	11/15/01	REVISED PER PERMITS COMMENTS - START SERVICE
14	11/15/01	REVISED PER PERMITS COMMENTS - START SERVICE
15	11/15/01	REVISED PER PERMITS COMMENTS - START SERVICE
16	11/15/01	REVISED PER PERMITS COMMENTS - START SERVICE
17	11/15/01	REVISED PER PERMITS COMMENTS - START SERVICE
18	11/15/01	REVISED PER PERMITS COMMENTS - START SERVICE
19	11/15/01	REVISED PER PERMITS COMMENTS - START SERVICE
20	11/15/01	REVISED PER PERMITS COMMENTS - START SERVICE
21	11/15/01	REVISED PER PERMITS COMMENTS - START SERVICE
22	11/15/01	REVISED PER PERMITS COMMENTS - START SERVICE
23	11/15/01	REVISED PER PERMITS COMMENTS - START SERVICE
24	11/15/01	REVISED PER PERMITS COMMENTS - START SERVICE
25	11/15/01	REVISED PER PERMITS COMMENTS - START SERVICE
26	11/15/01	REVISED PER PERMITS COMMENTS - START SERVICE
27	11/15/01	REVISED PER PERMITS COMMENTS - START SERVICE
28	11/15/01	REVISED PER PERMITS COMMENTS - START SERVICE
29	11/15/01	REVISED PER PERMITS COMMENTS - START SERVICE
30	11/15/01	REVISED PER PERMITS COMMENTS - START SERVICE
31	11/15/01	REVISED PER PERMITS COMMENTS - START SERVICE
32	11/15/01	REVISED PER PERMITS COMMENTS - START SERVICE
33	11/15/01	REVISED PER PERMITS COMMENTS - START SERVICE
34	11/15/01	REVISED PER PERMITS COMMENTS - START SERVICE
35	11/15/01	REVISED PER PERMITS COMMENTS - START SERVICE
36	11/15/01	REVISED PER PERMITS COMMENTS - START SERVICE
37	11/15/01	REVISED PER PERMITS COMMENTS - START SERVICE
38	11/15/01	REVISED PER PERMITS COMMENTS - START SERVICE
39	11/15/01	REVISED PER PERMITS COMMENTS - START SERVICE
40	11/15/01	REVISED PER PERMITS COMMENTS - START SERVICE
41	11/15/01	REVISED PER PERMITS COMMENTS - START SERVICE
42	11/15/01	REVISED PER PERMITS COMMENTS - START SERVICE
43	11/15/01	REVISED PER PERMITS COMMENTS - START SERVICE
44	11/15/01	REVISED PER PERMITS COMMENTS - START SERVICE
45	11/15/01	REVISED PER PERMITS COMMENTS - START SERVICE
46	11/15/01	REVISED PER PERMITS COMMENTS - START SERVICE
47	11/15/01	REVISED PER PERMITS COMMENTS - START SERVICE
48	11/15/01	REVISED PER PERMITS COMMENTS - START SERVICE
49	11/15/01	REVISED PER PERMITS COMMENTS - START SERVICE
50	11/15/01	REVISED PER PERMITS COMMENTS - START SERVICE

LEE ENGINEERING, INC.  
1275 South Patrick Drive, Suite H  
Satellite Beach, Florida 32937  
(407) 777-6270

RIVER BEND  
Landscaping Plan

STATUS	DATE
P PRELIMINARY	
A ISSUED FOR APPROVALS	
B BIDDING ONLY	
RC RELEASED FOR CONSTRUCTION	
RD RECORD DWG	
CK CHECK PRINT	

JOB No.: 0230-02  
FILE: MASTER  
BORER: N/A  
VP-1: M-LANDSCAPE  
VP-2: N/A  
VP-3: N/A  
VP-4: N/A  
VP-5: N/A  
VP-6: N/A  
VP-7: N/A  
VP-8: N/A  
VP-9: N/A  
VP-10: N/A  
DATE: 03-06-00  
SCALE: 1"=20'  
SHEET No.: L1  
ENGINEER OF RECORD